

Congress After the 2014 Midterms

TIMOTHY NOKKEN

UNIVERSITY OF TAMPERE & TEXAS TECH UNIVERSITY





*"If the Republicans take control of both houses of Congress,
it will be a huge change in the way nothing gets done."*

Post-Election House and Senate


Almost certain Republican Gains in Both Chambers

Implications

House

- Further Shift to the Right, but not much change
- House Rules Provide Majority Party With Procedural Tools to Run Chamber Effectively

Senate

- High Likelihood of Republican Takeover
 - What will this mean?
- 

Visualizing a Republican Senate

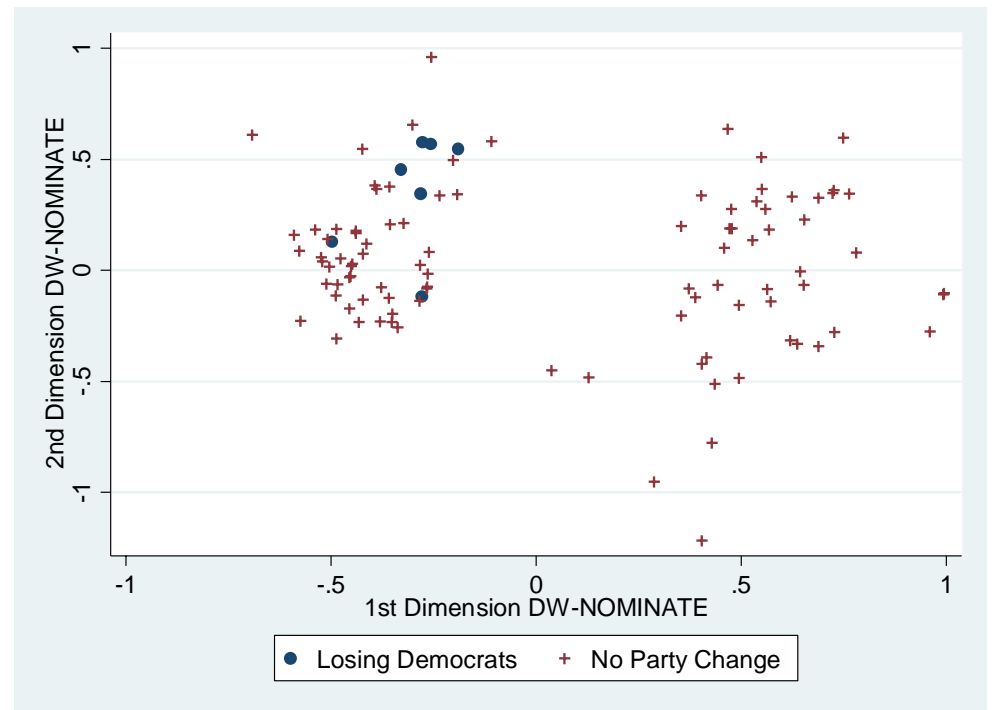
Assuming Nate Silver's Predictions* are right

- 7 seats moves from **D** => **R** (solid circles)
 - Iowa, Arkansas, Colorado, Louisiana, Alaska, South Dakota, Montana
- 1 seat from **R** => **I** (Kansas)

DW-NOMINATE measure of liberalism-conservatism

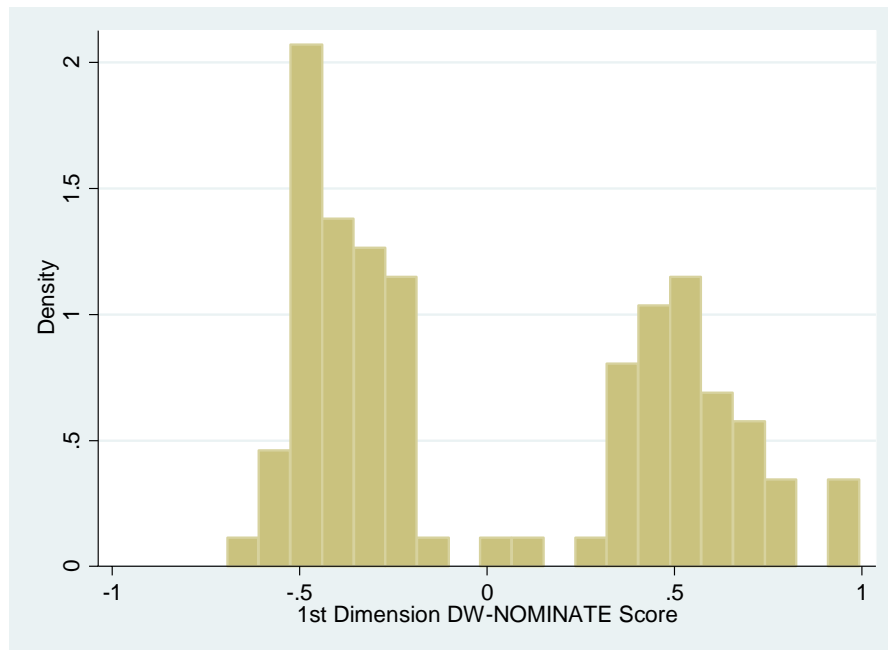
- Scores range from -1 (most liberal) to +1 (most conservative)
- Avg. Score of Losing Dems: -0.301
- Score of Losing Republican: 0.56

Replacing Democrats with "Average" Republicans (0.549) => Notable Conservative Shift

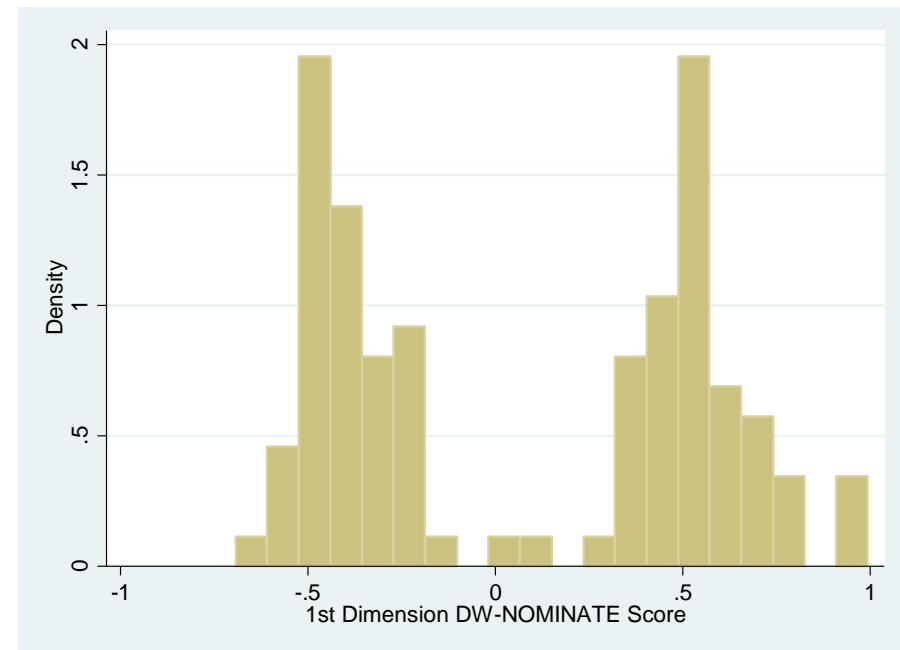


Conservative Shift in the Senate

Current



"Simulated" 114th – D's Replaced by Avg. R's



First Order of Business

Lame-Duck Session

- Session Convened AFTER November Elections, Prior to New Congress Starting in January
- Once a fairly rare occurrence, now pretty common
 - 10 of the last 11 Congresses convened post-election lame-duck session
 - Primary Agenda Item: Legislation to Fund Government & Avoid a Shutdown

Challenge for Potential Republican Majority

- Can they shift from being “Party of No” and lead?
- What, besides dislike for Obama, unites GOP?
- Real rifts in GOP & they are likely to emerge as Republicans try to Legislate.

Key Policy Issues Facing Congressional Republicans


Repeal Obamacare

- “Fix” it? (Unlikely) Replace it? (With What?)
- “Repeal” Certain to be Met with a Veto

Budgets & Spending

- Split between budget hawks & establishment
- E.g. Tea Party amendments on spending bills that Prolong Passage & Increases number of “tough votes”

Immigration

- Big Internal Split: Pro-Business/Pragmatic Wing vs. Conservative/Tea Party “Anti-Amnesty” Wing
 - House generally more conservative than Senate
 - Can GOP craft a bill that can pass Senate and House with Majority Republican Support?
 - What will Obama Accept?
- 

What Should We Expect?

Some Measure of Republican Discord

- Tea Party Willing to Annoy Leadership/Establishment

Democratic Filibusters

Vetoes from Obama

Little in the Way of Substantive Legislation, much like 113th

